



## Schlaucharmaturen mit Ausreissicherung – Interlock Serie











Hose Couplings with Wire Trap Area – Interlock Series

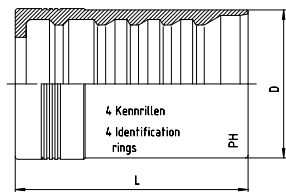






## SCHLAUCHARMATUREN MIT AUSREISSSICHERUNG - INTERLOCK SERIE HOSE COUPLINGS WITH WIRE TRAP AREA - INTERLOCK SERIES

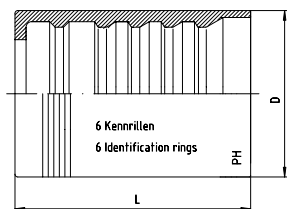
	Produktgruppen	Product Groups	Seite Page
	<b>Interlock-Fassungen</b> - Fassungen - P4-I - Fassungen - P6-I - Fassungen - P7-I	<b>Interlock-Ferrules</b> - Ferrules - P4-I - Ferrules - P6-I - Ferrules - P7-I	<b>3.2</b> <b>3.3</b> <b>3.4</b>
	<b>Interlock-Armaturen - SFL + SFS - Flansch</b> - Gerade - 45°-Bogen - 90°-Bogen	<b>Interlock-Fittings - SFL + SFS - Flange</b> - Straight - 45°-Elbow - 90°-Elbow	<b>3.5</b> <b>3.6</b> <b>3.7</b>
	<b>Interlock-Armaturen - DKOL</b> - Gerade - 45°-Bogen - 90°-Bogen	<b>Interlock-Fittings - DKOL</b> - Straight - 45°-Elbow - 90°-Elbow	<b>3.8</b> <b>3.9</b> <b>3.10</b>
	<b>Interlock-Armaturen - DKOS</b> - Gerade - 45°-Bogen - 90°-Bogen	<b>Interlock-Fittings - DKOS</b> - Straight - 45°-Elbow - 90°-Elbow	<b>3.11</b> <b>3.12</b> <b>3.13</b>
	<b>Interlock-Armaturen - JIC-37° - Nippel</b> - Gerade - 45°-Bogen - 90°-Bogen	<b>Interlock-Fittings - JIC-37° - Nipples</b> - Straight - 45°-Elbow - 90°-Elbow	<b>3.14</b> <b>3.15</b> <b>3.16</b>
	<b>Interlock-Armaturen - DKOR - 60°-Nippel</b> - Gerade - 45°-Bogen - 90°-Bogen	<b>Interlock-Fittings - DKOR - 60°-Nipples</b> - Straight - 45°-Elbow - 90°-Elbow	<b>3.17</b> <b>3.18</b> <b>3.19</b>
	<b>Interlock-Armaturen - CES - Nippel - 24°-Konus</b>	<b>Interlock-Fittings - CES - Male Nipples - 24°-Cone</b>	<b>3.20</b>
	<b>Interlock-Außengewinde-Nippel - AGR - 60°-Konus</b>	<b>Interlock-Male Nipples - AGR - 60°-Cone</b>	<b>3.21</b>
	<b>Interlock-Armaturen - JIC-Außengewinde-Nippel - 74°-Konus</b>	<b>Interlock-Fittings - JIC-Male Nipples - 74°-Cone</b>	<b>3.22</b>
	<b>Interlock-NPT-Außengewinde - AGN-Nippel</b>	<b>Interlock-NPT-Male - AGN-Nipples</b>	<b>3.23</b>



Mit Ausreißsicherung - Schwere Reihe  
Interlock Serie  
Außen und innen schälen  
Zu verwenden für Nippel Rubrik 3.5-3.23

With Wire Trap Area - Heavy Series  
Interlock Series  
External and internal skive  
To use for Nipples Category 3.5-3.23

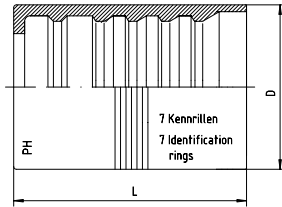
Schlauch Hose DN	DN Bore in.	D	L	Für Schlauchtyp For Hose Type	Bestellzeichen Order-Code	Brutto-Preis Gross-Price Euro (€)
19	3/4"	38	56	4 SP + 4 SH	P4-I-DN 19	21,00
25	1"	46	75	4 SP + 4 SH + R12	P4-I-DN 25	26,85
31	1 1/4"	55	85	4 SH	P4-I-DN 31	37,80
38	1 1/2"	64	100	4 SH	P4-I-DN 38	57,20
51	2"	78	103	4 SH	P4-I-DN 51	92,30



Mit Ausreißsicherung - Schwere Reihe  
 Interlock Serie  
 Außen und innen schälen  
 Zu verwenden für Nippel Rubrik 3.5-3.23

With Wire Trap Area - Heavy Series  
 Interlock Series  
 External and internal skive  
 To use for Nipples Category 3.5-3.23

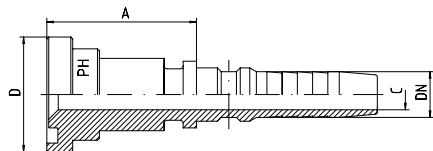
Schlauch Hose DN	DN Bore in.	D	L	Für Schlauchtyp For Hose Type	Bestellzeichen Order-Code	Brutto-Preis Gross-Price Euro (€)
19	3/4"	38,0	56	R13	P6-I-DN 19	25,20
25	1"	46,0	75	R13	P6-I-DN 25	32,22
31	1 1/4"	60,0	85	R13	P6-I-DN 31	49,15
38	1 1/2"	70,0	100	R13	P6-I-DN 38	74,35
51	2"	84,5	103	R13	P6-I-DN 51	119,99



Mit Ausreißsicherung - Schwere Reihe  
Interlock Serie  
Außen und innen schälen  
Zu verwenden für Nippel Rubrik 3.5-3.23

With Wire Trap Area - Heavy Series  
Interlock Series  
External and internal skive  
To use for Nipples Category 3.5-3.23

Schlauch Hose DN	DN Bore in.	D	L	Für Schlauchtyp For Hose Type	Bestellzeichen Order-Code	Brutto-Preis Gross-Price Euro (€)
19	3/4"	38	56	R15	P7-I-DN 19	35,20
25	1"	46	75	R15	P7-I-DN 25	55,90
31	1 1/4"	60	85	R15	P7-I-DN 31	84,20
38	1 1/2"	70	100	R15	P7-I-DN 38	135,10

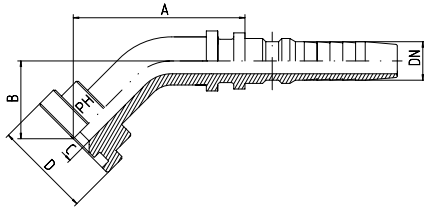


Mit Ausreißsicherung - Schwere Reihe  
Interlock Serie  
SAE-ISO-Flansch  
SFL 3 = 3000 P.S.I. - Gerade  
SFS 6 = 6000 P.S.I. - Gerade  
Andere Größen auf Anfrage!

With Wire Trap Area - Heavy Series  
Interlock Series  
SAE-ISO-Flange  
SFL 3 = 3000 P.S.I. - Straight  
SFS 6 = 6000 P.S.I. - Straight  
Other sizes on request!

Schlauch Hose DN	DN Bore in.	Flanschgröße Flange Dimensions		Ca. Maße Approx. Dimensions			Bestellzeichen Order-Code	Brutto-Preis Gross-Price Euro (€)
		D	in.	A		C		
19	3/4"	38,1	3/4"	41,0		14,5	I-SFL3-3/4"-DN 19	52,50
19	3/4"	44,5	1"	44,5		14,5	I-SFL3-1"-DN 19	63,10
25	1"	44,5	1"	52,5		20,0	I-SFL3-1"-DN 25	61,00
25	1"	50,8	1 1/4"	53,0		20,0	I-SFL3-1 1/4"-DN 25	92,60
31	1 1/4"	50,8	1 1/4"	53,0		25,0	I-SFL3-1 1/4"-DN 31	88,80
31	1 1/4"	60,3	1 1/2"	50,5		25,0	I-SFL3-1 1/2"-DN 31	129,50
38	1 1/2"	60,3	1 1/2"	77,5		31,5	I-SFL3-1 1/2"-DN 38	108,90
38	1 1/2"	71,4	2"	72,0		31,5	I-SFL3-2"-DN 38	205,00
51	2"	71,4	2"	72,0		42,0	I-SFL3-2"-DN 51	195,00

Schlauch Hose DN	DN Bore in.	Flanschgröße Flange Dimensions		Ca. Maße Approx. Dimensions			Bestellzeichen Order-Code	Brutto-Preis Gross-Price Euro (€)
		D	in.	A		C		
19	3/4"	41,3	3/4"	52,0		14,5	I-SFS6-3/4"-DN 19	44,50
25	1"	41,3	3/4"	47,5		20,0	I-SFS6-3/4"-DN 25	79,90
19	3/4"	47,6	1"	44,5		14,5	I-SFS6-1"-DN 19	65,40
25	1"	47,6	1"	64,0		20,0	I-SFS6-1"-DN 25	58,00
31	1 1/4"	47,6	1"	60,0		20,0	I-SFS6-1"-DN 31	298,00
25	1"	54,0	1 1/4"	54,5		20,0	I-SFS6-1 1/4"-DN 25	98,10
31	1 1/4"	54,0	1 1/4"	75,0		25,0	I-SFS6-1 1/4"-DN 31	85,00
38	1 1/2"	54,0	1 1/4"	105,0		25,0	I-SFS6-1 1/4"-DN 38	299,00
31	1 1/4"	63,5	1 1/2"	75,5		25,0	I-SFS6-1 1/2"-DN 31	136,00
38	1 1/2"	63,5	1 1/2"	103,0		31,5	I-SFS6-1 1/2"-DN 38	121,00
38	1 1/2"	79,4	2"	75,0		31,5	I-SFS6-2"-DN 38	229,50
51	2"	79,4	2"	85,0		42,0	I-SFS6-2"-DN 51	195,00



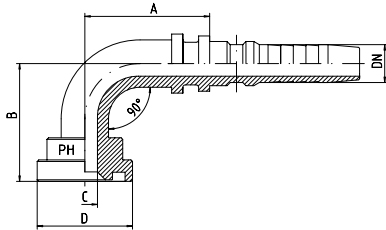
Mit Ausreißsicherung - Schwere Reihe  
Interlock Serie  
SAE-ISO-Flansch  
SFL 3 = 3000 P.S.I. - 45°-Bogen  
SFS 6 = 6000 P.S.I. - 45°-Bogen  
Andere Größen auf Anfrage!

With Wire Trap Area - Heavy Series  
Interlock Series  
SAE-ISO-Flange  
SFL 3 = 3000 P.S.I. - 45°-Elbow  
SFS 6 = 6000 P.S.I. - 45°-Elbow  
Other sizes on request!

Schlauch Hose DN	DN Bore in.	Flanschgröße Flange Dimensions		Ca. Maße Approx. Dimensions			Bestellzeichen Order-Code	Brutto-Preis Gross-Price Euro (€)
		D	in.	A	B	C		
19	3/4"	38,1	3/4"	87,0	38,0	14,5	I-SFL3-3/4"-45°-DN 19	85,00
19	3/4"	44,5	1"	89,0	39,5	14,5	I-SFL3-1"-45°-DN 19	105,00
25	1"	44,5	1"	92,0	39,0	20,0	I-SFL3-1"-45°-DN 25	98,00
25	1"	50,8	1 1/4"	117,0	44,0	20,0	I-SFL3-1 1/4"-45°-DN 25	180,00
31	1 1/4"	50,8	1 1/4"	110,0	45,0	25,0	I-SFL3-1 1/4"-45°-DN 31	170,00
31	1 1/4"	60,3	1 1/2"	137,0	46,0	25,0	I-SFL3-1 1/2"-45°-DN 31	235,00
38	1 1/2"	60,3	1 1/2"	133,0	49,0	31,0	I-SFL3-1 1/2"-45°-DN 38	215,50
38	1 1/2"	71,4	2"	141,5	60,0	31,0	I-SFL3-2"-45°-DN 38	430,00
51	2"	71,4	2"	155,0	65,0	41,0	I-SFL3-2"-45°-DN 51	410,00

Schlauch Hose DN	DN Bore in.	Flanschgröße Flange Dimensions		Ca. Maße Approx. Dimensions			Bestellzeichen Order-Code	Brutto-Preis Gross-Price Euro (€)
		D	in.	A	B	C		
19	3/4"	41,3	3/4"	86,0	34,0	14,5	I-SFS6-3/4"-45°-DN 19	85,00
25	1"	41,3	3/4"	89,5	41,0	19,0	I-SFS6-3/4"-45°-DN 25	174,50
19	3/4"	47,6	1"	90,0	40,0	14,5	I-SFS6-1"-45°-DN 19	115,00
25	1"	47,6	1"	92,0	40,0	20,0	I-SFS6-1"-45°-DN 25	98,00
25	1"	54,0	1 1/4"	120,0	44,0	20,0	I-SFS6-1 1/4"-45°-DN 25	180,00
31	1 1/4"	54,0	1 1/4"	110,0	46,0	25,0	I-SFS6-1 1/4"-45°-DN 31	170,00
31	1 1/4"	63,5	1 1/2"	137,0	48,0	25,0	I-SFS6-1 1/2"-45°-DN 31	235,00
38	1 1/2"	63,5	1 1/2"	133,0	48,0	31,0	I-SFS6-1 1/2"-45°-DN 38	215,50
38	1 1/2"	79,4	2"	143,0	65,0	31,0	I-SFS6-2"-45°-DN 38	430,00
51	2"	79,4	2"	155,0	65,0	41,0	I-SFS6-2"-45°-DN 51	410,00



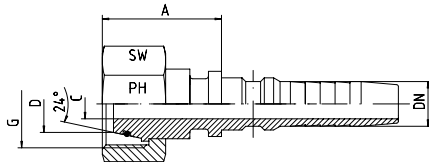


Mit Ausreißsicherung - Schwere Reihe  
Interlock Serie  
SAE-ISO-Flansch  
SFL 3 = 3000 P.S.I. - 90°-Bogen  
SFS 6 = 6000 P.S.I. - 90°-Bogen  
Andere Größen auf Anfrage!

With Wire Trap Area - Heavy Series  
Interlock Series  
SAE-ISO-Flange  
SFL 3 = 3000 P.S.I. - 90°-Elbow  
SFS 6 = 6000 P.S.I. - 90°-Elbow  
Other sizes on request!

Schlauch Hose DN	DN Bore in.	Flanschgröße Flange Dimensions		Ca. Maße Approx. Dimensions			Bestellzeichen Order-Code	Brutto-Preis Gross-Price Euro (€)
		D	in.	A	B	C		
19	3/4"	38,1	3/4"	78,0	70,0	14,5	I-SFL3-3/4"-90°-DN 19	85,00
19	3/4"	44,5	1"	77,0	71,0	14,5	I-SFL3-1"-90°-DN 19	105,00
25	1"	44,5	1"	82,0	75,0	20,0	I-SFL3-1"-90°-DN 25	98,00
25	1"	50,8	1 1/4"	105,0	88,0	20,0	I-SFL3-1 1/4"-90°-DN 25	180,00
31	1 1/4"	50,8	1 1/4"	102,0	91,5	25,0	I-SFL3-1 1/4"-90°-DN 31	170,00
31	1 1/4"	60,3	1 1/2"	123,0	95,0	25,0	I-SFL3-1 1/2"-90°-DN 31	235,00
38	1 1/2"	60,3	1 1/2"	122,5	105,0	31,0	I-SFL3-1 1/2"-90°-DN 38	215,50
38	1 1/2"	71,4	2"	124,0	121,0	31,0	I-SFL3-2"-90°-DN 38	430,00
51	2"	71,4	2"	144,0	137,0	41,0	I-SFL3-2"-90°-DN 51	410,00

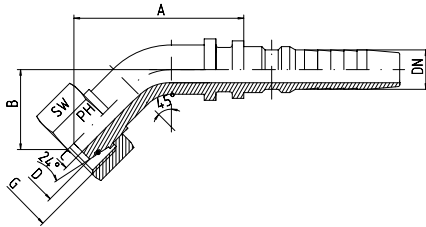
Schlauch Hose DN	DN Bore in.	Flanschgröße Flange Dimensions		Ca. Maße Approx. Dimensions			Bestellzeichen Order-Code	Brutto-Preis Gross-Price Euro (€)
		D	in.	A	B	C		
19	3/4"	41,3	3/4"	78,0	67,0	14,5	I-SFS6-3/4"-90°-DN 19	85,00
25	1"	41,3	3/4"	80,0	81,5	19,0	I-SFS6-3/4"-90°-DN 25	174,50
19	3/4"	47,6	1"	77,0	72,0	14,5	I-SFS6-1"-90°-DN 19	115,00
25	1"	47,6	1"	82,0	77,0	20,0	I-SFS6-1"-90°-DN 25	98,00
25	1"	54,0	1 1/4"	108,0	90,0	20,0	I-SFS6-1 1/4"-90°-DN 25	180,00
31	1 1/4"	54,0	1 1/4"	102,0	93,5	25,0	I-SFS6-1 1/4"-90°-DN 31	170,00
31	1 1/4"	63,5	1 1/2"	124,0	96,0	25,0	I-SFS6-1 1/2"-90°-DN 31	235,00
38	1 1/2"	63,5	1 1/2"	122,5	107,0	31,0	I-SFS6-1 1/2"-90°-DN 38	215,50
38	1 1/2"	79,4	2"	124,0	121,5	31,0	I-SFS6-2"-90°-DN 38	430,00
51	2"	79,4	2"	144,0	142,0	41,0	I-SFS6-2"-90°-DN 51	410,00



Mit Ausreißsicherung  
Interlock Serie  
DKOL - Gerade - 24°-Konus

With Wire Trap Area  
Interlock Series  
DKOL - Gerade - 24°-Cone

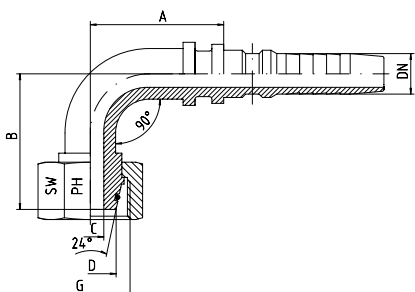
Schlauch Hose DN	DN Bore in.	Gewinde Thread G	Rohr A.D. Tube O.D. D	Ca. Maße Approx. Dimensions			Bestellzeichen Order-Code	Brutto-Preis Gross-Price Euro (€)
				A	C	SW		
19	3/4"	M 30 x 2	22	38,5	14,5	36	I-DKOL-22-DN 19	36,90
25	1"	M 36 x 2	28	38,0	20,0	41	I-DKOL-28-DN 25	54,50
31	1 1/4"	M 45 x 2	35	42,0	25,0	50	I-DKOL-35-DN 31	85,90
38	1 1/2"	M 52 x 2	42	41,0	31,5	60	I-DKOL-42-DN 38	141,50



Mit Ausreißsicherung  
Interlock Serie  
DKOL - 45°-Bogen - 24°-Konus

With Wire Trap Area  
Interlock Series  
DKOL - 45°-Elbow - 24°-Cone

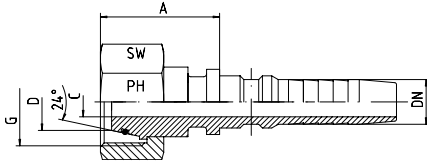
Schlauch Hose DN	DN Bore in.	Gewinde Thread G	Rohr A.D. Tube O.D. D	Ca. Maße Approx. Dimensions				Bestellzeichen Order-Code	Brutto-Preis Gross-Price Euro (€)
				A	B	C	SW		
19	3/4"	M 30 x 2	22	95	45	14,5	36	I-DKOL-22-45°-DN 19	81,30
25	1"	M 36 x 2	28	102	50	20,0	41	I-DKOL-28-45°-DN 25	94,90
31	1 1/4"	M 45 x 2	35	120	50	25,0	50	I-DKOL-35-45°-DN 31	145,00
38	1 1/2"	M 52 x 2	42	140	61	31,0	60	I-DKOL-42-45°-DN 38	199,90



Mit Ausreißsicherung  
Interlock Serie  
DKOL - 90°-Bogen - 24°-Konus

With Wire Trap Area  
Interlock Series  
DKOL - 90°-Elbow - 24°-Cone

Schlauch Hose DN	DN Bore in.	Gewinde Thread G	Rohr A.D. Tube O.D. D	Ca. Maße Approx. Dimensions				Bestellzeichen Order-Code	Brutto-Preis Gross-Price Euro (€)
				A	B	C	SW		
19	3/4"	M 30 x 2	22	78,5	80	14,5	36	I-DKOL-22-90°-DN 19	81,30
25	1"	M 36 x 2	28	87,0	92	20,0	41	I-DKOL-28-90°-DN 25	94,90
31	1 1/4"	M 45 x 2	35	103,0	98	25,0	50	I-DKOL-35-90°-DN 31	145,00
38	1 1/2"	M 52 x 2	42	124,0	117	31,0	60	I-DKOL-42-90°-DN 38	199,90



Mit Ausreißsicherung - Schwere Reihe  
Interlock Serie  
DKOS - Gerade - 24°-Konus

With Wire Trap Area - Heavy Series  
Interlock Series  
DKOS - Straight - 24°-Cone

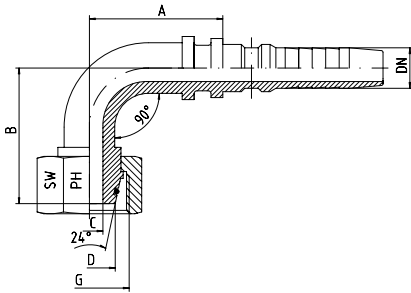
Schlauch Hose DN	DN Bore in.	Gewinde Thread G	Rohr A.D. Tube O.D. D	Ca. Maße Approx. Dimensions			Bestellzeichen Order-Code	Brutto-Preis Gross-Price Euro (€)
				A	C	SW		
19	3/4"	M 30 x 2	20	34,5	14,5	36	I-DKOS-20-DN 19	36,90
19	3/4"	M 36 x 2	25	41,0	14,5	46	I-DKOS-25-DN 19	34,30
25	1"	M 36 x 2	25	38,5	20,0	46	I-DKOS-25-DN 25	54,50
25	1"	M 42 x 2	30	43,5	20,0	50	I-DKOS-30-DN 25	52,50
31	1 1/4"	M 42 x 2	30	43,0	23,0	50	I-DKOS-30-DN 31	139,00
31	1 1/4"	M 52 x 2	38	48,5	25,0	60	I-DKOS-38-DN 31	81,00
38	1 1/2"	M 52 x 2	38	41,0	28,0	60	I-DKOS-38-DN 38	141,50
38	1 1/2"	M 68 x 2	50	51,5	31,5	80	I-DKOS-50-DN 38	175,00



Mit Ausreißsicherung - Schwere Reihe  
Interlock Serie  
DKOS - 45°-Bogen - 24°-Konus

With Wire Trap Area - Schwere Reihe  
Interlock Series  
DKOS - 45°-Elbow - 24°-Cone

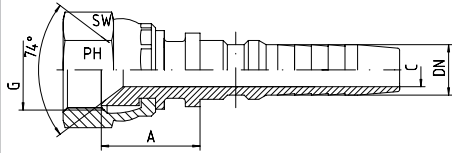
Schlauch Hose DN	DN Bore in.	Gewinde Thread G	Rohr A.D. Tube O.D. D	Ca. Maße Approx. Dimensions				Bestellzeichen Order-Code	Brutto-Preis Gross-Price Euro (€)
				A	B	C	SW		
19	3/4"	M 30 x 2	20	100	45	14,5	36	I-DKOS-20-45°-DN 19	73,90
19	3/4"	M 36 x 2	25	90	40	14,5	46	I-DKOS-25-45°-DN 19	71,00
25	1"	M 36 x 2	25	103	52	20,0	46	I-DKOS-25-45°-DN 25	94,90
25	1"	M 42 x 2	30	97	43	20,0	50	I-DKOS-30-45°-DN 25	96,50
31	1 1/4"	M 52 x 2	38	117	52	25,0	60	I-DKOS-38-45°-DN 31	145,00
38	1 1/2"	M 68 x 2	50	136	53	31,0	80	I-DKOS-50-45°-DN 38	399,00



Mit Ausreißsicherung - Schwere Reihe  
Interlock Serie  
DKOS - 90°-Bogen - 24°-Konus

With Wire Trap Area - Schwere Reihe  
Interlock Series  
DKOS - 90°-Elbow - 24°-Cone

Schlauch Hose DN	DN Bore in.	Gewinde Thread G	Rohr A.D. Tube O.D. D	Ca. Maße Approx. Dimensions				Bestellzeichen Order-Code	Brutto-Preis Gross-Price Euro (€)
				A	B	C	SW		
19	3/4"	M 30 x 2	20	78,5	83,0	14,5	36	I-DKOS-20-90°-DN 19	73,90
19	3/4"	M 36 x 2	25	75,0	76,0	14,5	46	I-DKOS-25-90°-DN 19	71,00
25	1"	M 36 x 2	25	84,0	95,5	20,0	46	I-DKOS-25-90°-DN 25	94,90
25	1"	M 42 x 2	30	84,0	83,0	20,0	50	I-DKOS-30-90°-DN 25	96,50
31	1 1/4"	M 52 x 2	38	103,0	101,0	25,0	60	I-DKOS-38-90°-DN 31	145,00
38	1 1/2"	M 68 x 2	50	125,0	111,0	31,0	80	I-DKOS-50-90°-DN 38	399,00

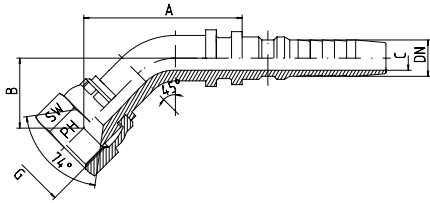


Mit Ausreißsicherung - Schwere Reihe  
Interlock Serie  
JIC-37° - Nippel für 74°-Konusaufnahme mit  
Überwurfmutter - Gerade

With Wire Trap Area - Heavy Series  
Interlock Series  
JIC-37° - Female Nipples for Connectors with  
74°-Cone - Straight

Schlauch Hose DN	DN Bore in.	Gewinde Thread G = UN	Ca. Maße Approx. Dimensions			Bestellzeichen Order-Code	Brutto-Preis Gross-Price Euro (€)
			A	C	SW		
19	3/4"	1 1/16"-12	35,0	14,5	32	I-DKJ-1 1/16"-DN 19	29,75
19	3/4"	1 5/16"-12	34,0	14,5	41	I-DKJ-1 5/16"-DN 19	51,95
25	1"	1 5/16"-12	34,0	20,0	41	I-DKJ-1 5/16"-DN 25	49,95
25	1"	1 5/8"-12	27,0	20,0	50	I-DKJ-1 5/8"-DN 25	94,50
31	1 1/4"	1 5/8"-12	37,0	25,0	50	I-DKJ-1 5/8"-DN 31	88,50
31	1 1/4"	1 7/8"-12	33,0	25,0	60	I-DKJ-1 7/8"-DN 31	128,50
38	1 1/2"	1 7/8"-12	41,5	31,5	60	I-DKJ-1 7/8"-DN 38	123,60
38	1 1/2"	2 1/2"-12				I-DKJ-2 1/2"-DN 38	225,00
51	2"	2 1/2"-12	67,5	42,0	70	I-DKJ-2 1/2"-DN 51	177,00

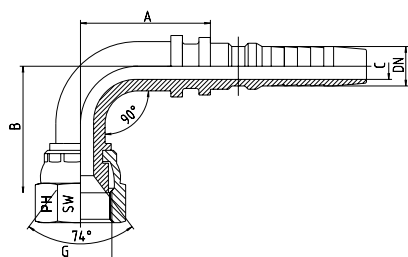




Mit Ausreißsicherung - Schwere Reihe  
Interlock Serie  
JIC-37° - Nippel für 74°-Konusaufnahme mit  
Überwurfmutter - 45°-Bogen

With Wire Trap Area - Heavy Series  
Interlock Series  
JIC-37° - Female Nipples for Connectors with  
74°-Cone - 45°-Elbow

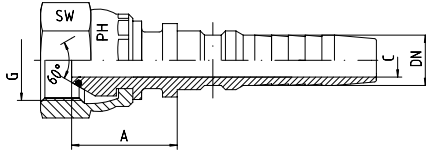
Schlauch Hose DN	DN Bore in.	Gewinde Thread G = UN	Ca. Maße Approx. Dimensions				Bestellzeichen Order-Code	Brutto-Preis Gross-Price Euro (€)
			A	B	C	SW		
19	3/4"	1 1/16"-12	93,0	37,5	14,5	32	I-DKJ-1 1/16"-45°-DN 19	82,50
19	3/4"	1 5/16"-12	93,0	43,5	14,5	41	I-DKJ-1 5/16"-45°-DN 19	93,50
25	1"	1 5/16"-12	101,0	47,0	20,0	41	I-DKJ-1 5/16"-45°-DN 25	112,00
25	1"	1 5/8"-12	123,0	51,0	20,0	50	I-DKJ-1 5/8"-45°-DN 25	185,00
31	1 1/4"	1 5/8"-12	116,5	49,0	25,0	50	I-DKJ-1 5/8"-45°-DN 31	166,50
31	1 1/4"	1 7/8"-12	146,0	52,0	25,0	60	I-DKJ-1 7/8"-45°-DN 31	269,90
38	1 1/2"	1 7/8"-12	130,0	50,0	31,0	60	I-DKJ-1 7/8"-45°-DN 38	249,90
38	1 1/2"	2 1/2"-12					I-DKJ-2 1/2"-45°-DN 38	475,00
51	2"	2 1/2"-12	166,5	78,0	41,0	70	I-DKJ-2 1/2"-45°-DN 51	399,90



Mit Ausreißsicherung - Schwere Reihe  
Interlock Serie  
JIC-37° - Nippel für 74°-Konusaufnahme mit  
Überwurfmutter - 90°-Bogen

With Wire Trap Area - Heavy Series  
Interlock Series  
JIC-37° - Female Nipples for Connectors with  
74°-Cone - 90°-Elbow

Schlauch Hose DN	DN Bore in.	Gewinde Thread G = UN	Ca. Maße Approx. Dimensions				Bestellzeichen Order-Code	Brutto-Preis Gross-Price Euro (€)
			A	B	C	SW		
19	3/4"	1 1/16"-12	79	72,0	14,5	32	I-DKJ-1 1/16"-90°-DN 19	82,50
19	3/4"	1 5/16"-12	78	79,0	14,5	41	I-DKJ-1 5/16"-90°-DN 19	93,50
25	1"	1 5/16"-12	85	86,0	20,0	41	I-DKJ-1 5/16"-90°-DN 25	112,00
25	1"	1 5/8"-12	107	93,0	20,0	50	I-DKJ-1 5/8"-90°-DN 25	185,00
31	1 1/4"	1 5/8"-12	103	96,0	25,0	50	I-DKJ-1 5/8"-90°-DN 31	166,50
31	1 1/4"	1 7/8"-12	125	98,0	25,0	60	I-DKJ-1 7/8"-90°-DN 31	269,90
38	1 1/2"	1 7/8"-12	122	107,0	31,0	60	I-DKJ-1 7/8"-90°-DN 38	249,90
38	1 1/2"	2 1/2"-12					I-DKJ-2 1/2"-90°-DN 38	475,00
51	2"	2 1/2"-12	145	151,5	41,0	70	I-DKJ-2 1/2"-90°-DN 51	399,90



Mit Ausreißsicherung - Schwere Reihe  
Interlock Serie  
DKOR - mit O-Ring und Überwurfmutter  
BSP-Gewinde für Gegenanschluss mit 60°-Konus  
- Gerade

With Wire Trap Area - Heavy Series  
Interlock Series  
DKOR - with O-ring and BSP Union Nut  
For Connectors with 60°-Cone  
- Straight

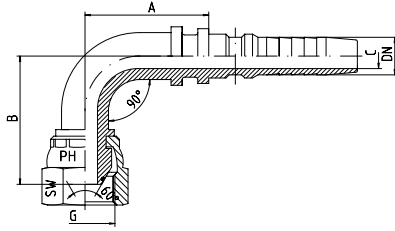
Schlauch Hose DN	DN Bore in.	Gewinde Thread G	Ca. Maße Approx. Dimensions			Bestellzeichen Order-Code	Brutto-Preis Gross-Price Euro (€)
			A	C	SW		
19	3/4"	3/4"-14	32	14,5	32	I-DKOR-3/4"-DN 19	29,75
25	1"	1"-11	39	20,0	41	I-DKOR-1"-DN 25	47,50
31	1 1/4"	1 1/4"-11	42	25,0	50	I-DKOR-1 1/4"-DN 31	77,50
38	1 1/2"	1 1/2"-11	40	31,5	60	I-DKOR-1 1/2"-DN 38	99,95
51	2"	2"-11	39	42,0	70	I-DKOR-2"-DN 51	187,50



Mit Ausreißsicherung - Schwere Reihe  
Interlock Serie  
DKOR - mit O-Ring und Überwurfmutter  
BSP-Gewinde für Gegenanschluss mit 60°-Konus  
- 45°-Bogen

With Wire Trap Area - Heavy Series  
Interlock Series  
DKOR - with O-ring and BSP Union Nut  
For Connectors with 60°-Cone  
- 45°-Elbow

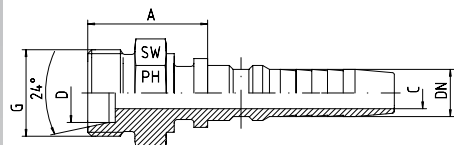
Schlauch Hose DN	DN Bore in.	Gewinde Thread G	Ca. Maße Approx. Dimensions				Bestellzeichen Order-Code	Brutto-Preis Gross-Price Euro (€)
			A	B	C	SW		
19	3/4"	3/4"-14	90	39	14,5	32	I-DKOR-3/4"-45°-DN 19	53,50
25	1"	1"-11	97	46	20,0	41	I-DKOR-1"-45°-DN 25	75,00
31	1 1/4"	1 1/4"-11	117	52	25,0	50	I-DKOR-1 1/4"-45°-DN 31	142,50
38	1 1/2"	1 1/2"-11	134	49	31,0	60	I-DKOR-1 1/2"-45°-DN 38	198,75
51	2"	2"-11	170	81	41,0	70	I-DKOR-2"-45°-DN 51	370,00



Mit Ausreißsicherung - Schwere Reihe  
Interlock Serie  
DKOR - mit O-Ring und Überwurfmutter  
BSP-Gewinde für Gegenanschluss mit 60°-Konus  
- 90°-Bogen

With Wire Trap Area - Heavy Series  
Interlock Series  
DKOR - with O-ring and BSP Union Nut  
For Connectors with 60°-Cone  
- 90°-Elbow

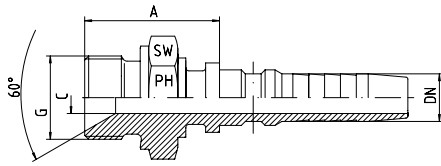
Schlauch Hose DN	DN Bore in.	Gewinde Thread G	Ca. Maße Approx. Dimensions				Bestellzeichen Order-Code	Brutto-Preis Gross-Price Euro (€)
			A	B	C	SW		
19	3/4"	3/4"-14	77	75	14,5	32	I-DKOR-3/4"-90°-DN 19	53,50
25	1"	1"-11	83	85	20,0	41	I-DKOR-1"-90°-DN 25	75,00
31	1 1/4"	1 1/4"-11	103	100	25,0	50	I-DKOR-1 1/4"-90°-DN 31	142,50
38	1 1/2"	1 1/2"-11	118	110	31,0	60	I-DKOR-1 1/2"-90°-DN 38	198,75
51	2"	2"-11	146	152	41,0	70	I-DKOR-2"-90°-DN 51	370,00



Mit Ausreißsicherung - Schwere Reihe  
Interlock Serie  
CES mit 24°-Konus für Schneidringverschraubung  
DIN 2353 / DIN EN ISO 8434-1

With Wire Trap Area - Heavy Series  
Interlock Series  
CES with 24°-Cone for Compression Couplings  
DIN 2353 / DIN EN ISO 8434-1

Schlauch Hose DN	DN Bore in.	Gewinde Thread G	Rohr A.D. Tube O.D. D	Ca. Maße Approx. Dimensions			Bestellzeichen Order-Code	Brutto-Preis Gross-Price Euro (€)
				A	C	SW		
19	3/4"	M 30 x 2	20	37,5	14,5	32	I-CES-20-DN 19	29,20
19	3/4"	M 36 x 2	25	36,0	14,5	36	I-CES-25-DN 19	35,00
25	1"	M 36 x 2	25	43,0	20,0	36	I-CES-25-DN 25	50,05
25	1"	M 42 x 2	30	40,0	20,0	46	I-CES-30-DN 25	50,05
31	1 1/4"	M 52 x 2	38	44,5	25,0	55	I-CES-38-DN 31	85,00



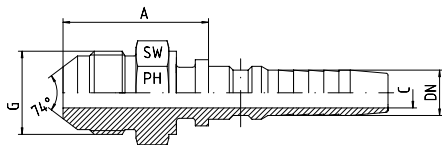
Mit 60°-Innenkonus und angedrehter Dichtkante  
Form B

Gewinde: BSP - Zylindrisch

With 60°-Cone and Sealing Shoulder Form B

Thread: BSP - Parallel

Schlauch Hose DN	DN Bore in.	Gewinde Thread G	Ca. Maße Approx. Dimensions			Bestellzeichen Order-Code	Brutto-Preis Gross-Price Euro (€)
			A	C	SW		
19	3/4"	3/4"-14	40,5	14,5	32	I-AGR-3/4"-DN 19	22,50
19	3/4"	1"-11	44,5	14,5	41	I-AGR-1"-DN 19	45,80
25	1"	1"-11	48,5	20,0	41	I-AGR-1"-DN 25	32,50
31	1 1/4"	1 1/4"-11	44,0	25,0	50	I-AGR-1 1/4"-DN 31	65,20
38	1 1/2"	1 1/2"-11	54,0	31,5	55	I-AGR-1 1/2"-DN 38	101,00
51	2"	2"-11	52,5	42,0	70	I-AGR-2"-DN 51	248,00

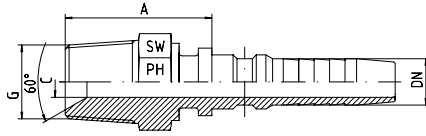


Mit Ausreißsicherung - Schwere Reihe  
Interlock Serie  
JIC-Außengewinde - 74°-Konus

*With Wire Trap Area - Heavy Series  
Interlock Series  
JIC-Male - 74°-Cone*

Schlauch Hose DN	DN Bore in.	Gewinde Thread G = UN	Ca. Maße Approx. Dimensions			Bestellzeichen Order-Code	Brutto-Preis Gross-Price Euro (€)
			A	C	SW		
19	3/4"	1 1/16"-12	48,5	14,5	30	I-AGJ-1 1/16"-DN 19	33,10
25	1"	1 5/16"-12	48,0	20,0	36	I-AGJ-1 5/16"-DN 25	57,00
31	1 1/4"	1 5/8"-12	48,0	25,0	46	I-AGJ-1 5/8"-DN 31	80,00
38	1 1/2"	1 7/8"-12	57,0	31,5	50	I-AGJ-1 7/8"-DN 38	111,00
51	2"	2 1/2"-12	60,0	42,0	65	I-AGJ-2 1/2"-DN 51	164,00





Mit 60°-Konusaufnahme  
Interlock Serie

With 60°-Cone  
Interlock Series

Schlauch Hose DN	DN Bore in.	Gewinde Thread G = NPT	Ca. Maße Approx. Dimensions			Bestellzeichen Order-Code	Brutto-Preis Gross-Price Euro (€)
			A	C	SW		
19	3/4"	3/4"-14	41,0	14,5	30	I-AGN-3/4"-DN 19	23,50
19	3/4"	1"-11,5		14,5	36	I-AGN-1"-DN 19	45,00
25	1"	1"-11,5	65,5	20,0	36	I-AGN-1"-DN 25	32,75
31	1 1/4"	1 1/4"-11,5	53,0	25,0	46	I-AGN-1 1/4"-DN 31	68,75
38	1 1/2"	1 1/2"-11,5	60,5	31,0	50	I-AGN-1 1/2"-DN 38	99,50
51	2"	2"-11,5	53,0	42,0	65	I-AGN-2"-DN 51	198,90

